

STATE OF FLORIDA }  
 COUNTY OF MARTIN }  
 This Plat was filed for record at \_\_\_\_\_ M.  
 this 8th day of OCTOBER  
 1963, and duly recorded in Plat Book No.  
 4 on page 31  
 DOROTHY PIERCE, Clerk Circuit Court  
 By DOROTHY PIERCE

I hereby certify that the base property lines shown hereon were obtained by field measurements of distances and angles, and that the location and course of the Loxahatchee River was obtained from aerial surveys made Rader & Associates of Miami, and by Wm. Bosworth, Lantana, Florida.

(Signed) J. D. PAYNE

Registered Land Surveyor  
 Florida Certificate No. 1346

Bearings shown hereon refer to the meridian established by the Hobe Sound, Florida Survey as shown on sheet #15, File No. 5-342-3226 on file in the U.S. Engineers Office, Jacksonville, Fla.

AREAS SHOWN THUS: [Stippled Area] INDICATE LAND LYING ABOVE MEAN HIGH WATER.

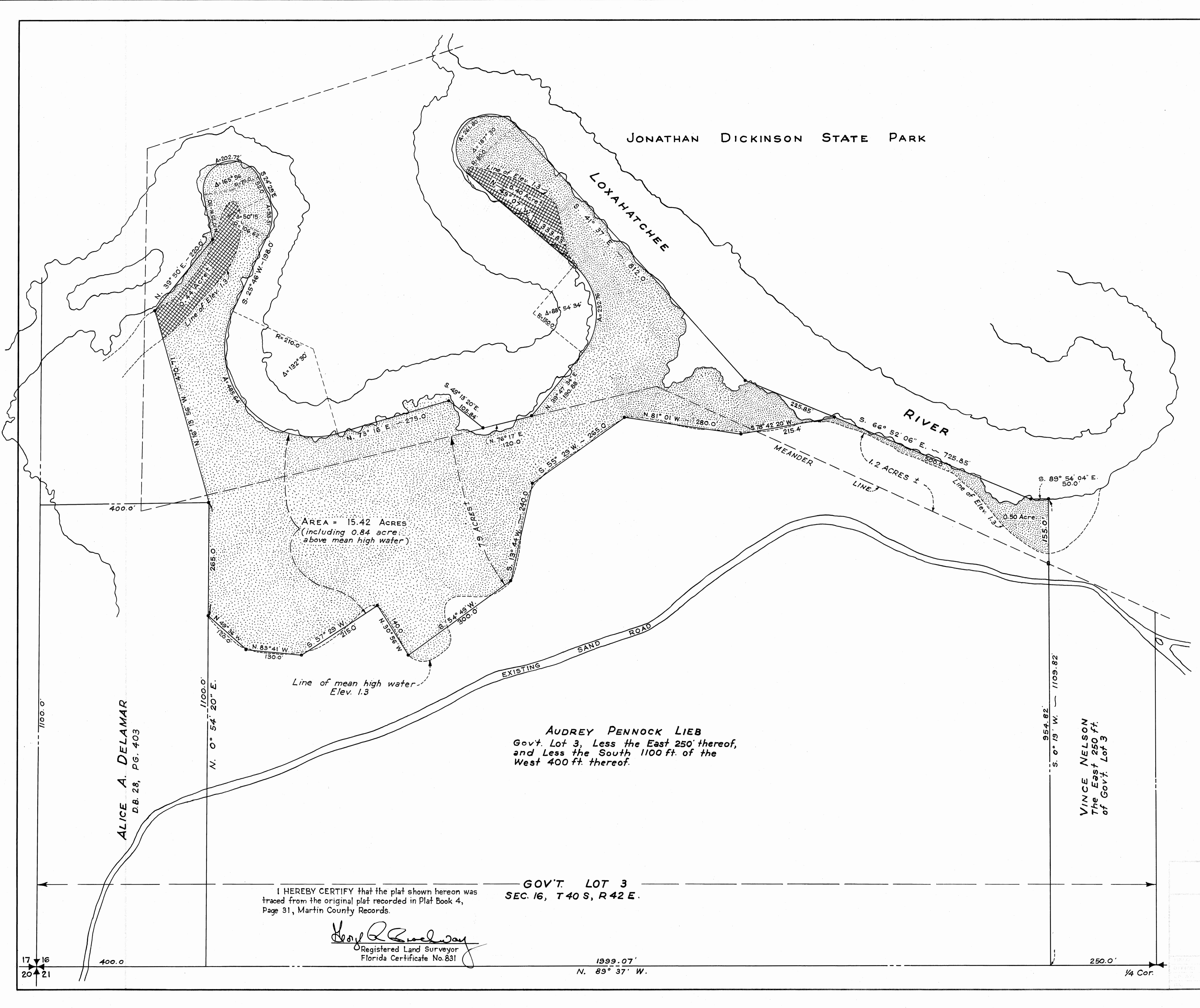
AREAS SHOWN THUS: [Cross-hatched Area] INDICATE LAND LYING BELOW MEAN HIGH WATER.

Traced in the Office of Brockway, Weber & Brockway, Engineers and Surveyors, West Palm Beach, Florida, by J.J. Flowers - December 6, 1963.

**BULKHEAD LINE**  
 ON GOVERNMENT LOT 3,  
 SECTION 16, T.40S, R.42 E.  
 MARTIN COUNTY, FLORIDA

JAMES D. PAYNE  
 Registered Land Surveyor  
 Jupiter, Florida

DATE	SCALE	JOB No.	FIELD BOOK
NOV. 1962	1" = 100'	62-231	MC-21-52



**AUDREY PENNOCK LIEB**  
 Gov't. Lot 3, Less the East 250' thereof,  
 and Less the South 1100 ft. of the  
 West 400 ft. thereof.

**ALICE A. DELAMAR**  
 D.B. 28, Pg. 403

**VINCE NELSON**  
 The East 250 ft.  
 of Gov't. Lot 3

I HEREBY CERTIFY that the plat shown hereon was traced from the original plat recorded in Plat Book 4, Page 31, Martin County Records.

*[Signature]*  
 Registered Land Surveyor  
 Florida Certificate No. 831

**GOV'T. LOT 3**  
 SEC. 16, T.40S, R.42 E.

1999.07'  
 N. 89° 37' W.

17  
 20  
 21

1/4 Cor.